



**LONG ISLAND HOMES**

**Karen Reynolds**

Mobile: 0414 725 051

[Karen.r@longislandhomes.com.au](mailto:Karen.r@longislandhomes.com.au)

[www.longislandhomes.com.au](http://www.longislandhomes.com.au)



Price based on standard floor plan and façade. Image depicts upgraded items not included in the price.

**\$378,648**

**Central Walk - Drysdale**

**Frontage: 18m**

**Package Price: \$378,648**

**Lot Number: 33 Woodville St**

**Lot Size: 652sqm**

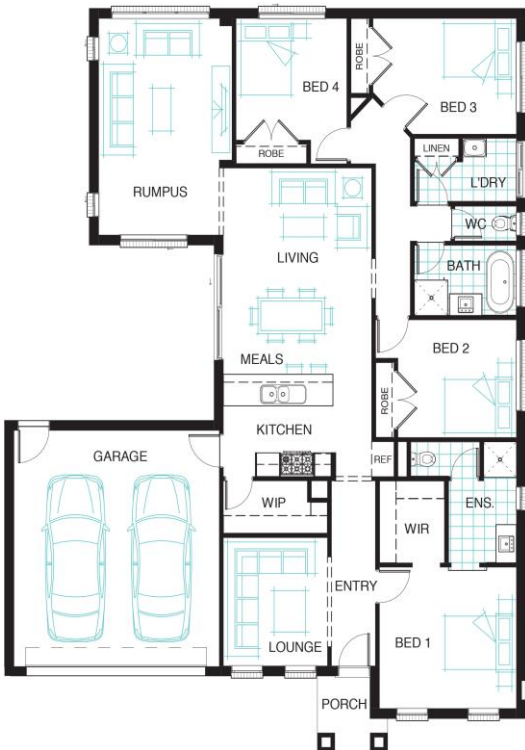
**House: Olympus 220 – Altitude Range**

**At a glance:**



**Inclusions List:**

- Site Costs to Class “M1” slab classification
- Floor Coverings Throughout
- 900mm Stainless Steel Appliances
- 20mm Stone to Kitchen Benches
- 2590mm Ceiling Heights
- Alto Turnkey Move in Pack
- Render Feature to Designer Façade



Disclaimer: Long Island Homes reserves the right to amend specification and prices without notice. All plans and facades are indicative conceptions and are not intended to be an actual depiction of the building, fencing, paths, driveways or landscaping and are not necessarily to scale. All dimensions are approximate, refer to contract documentations for details. Working drawings take precedence over brochure.