



# Cumberland<sup>275</sup>

Lumen

Lot 34 Woodville St  
Drysdale

3 2 2

House Size:  
**29.6SQ**  
Lot Size:  
**653m<sup>2</sup>**

Package Price:

# \$473,713

## It's all included

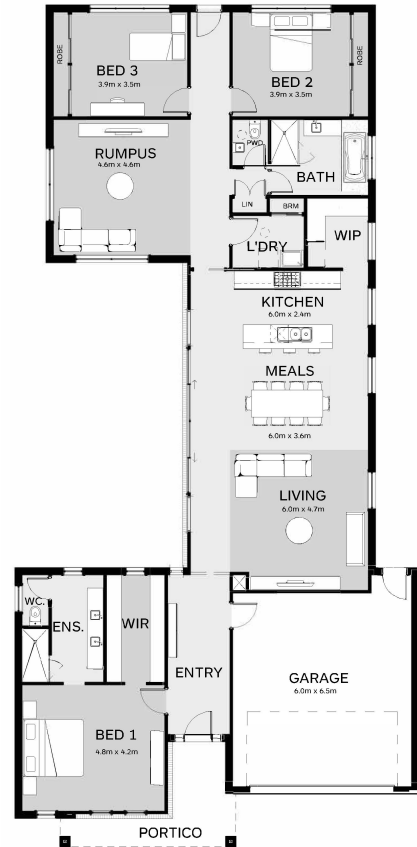
Carpet to Bedrooms & Living Areas

Tiles to Remaining Areas

Colorbond Steel Roof

Site Cost Allowance

Developer Requirements



**HAMLAN**

Contact your  
new home  
consultant **today**

Peter Mallett  
peter@hamlan.com.au  
0414 524 195

hamlan.com.au



Local Builders. Local Suppliers. Local People.

CENTRAL *Walk*  
DRYSDALE

Images are for illustrative purposes only and may not represent the final product. Prices are based on availability and price of land. Hamlan Homes reserves the right to alter any price or substitute any home without prior notice. All house and land packages are subject to developers final approval. Speak to a new home consultant for more information. www.hamlan.com.au Images are for illustrative purposes only and may not represent the final product. Prices are based on availability and price of land. Hamlan Homes reserves the right to alter any price or substitute any home without prior notice. Speak to a new home consultant for more information. www.hamlan.com.au